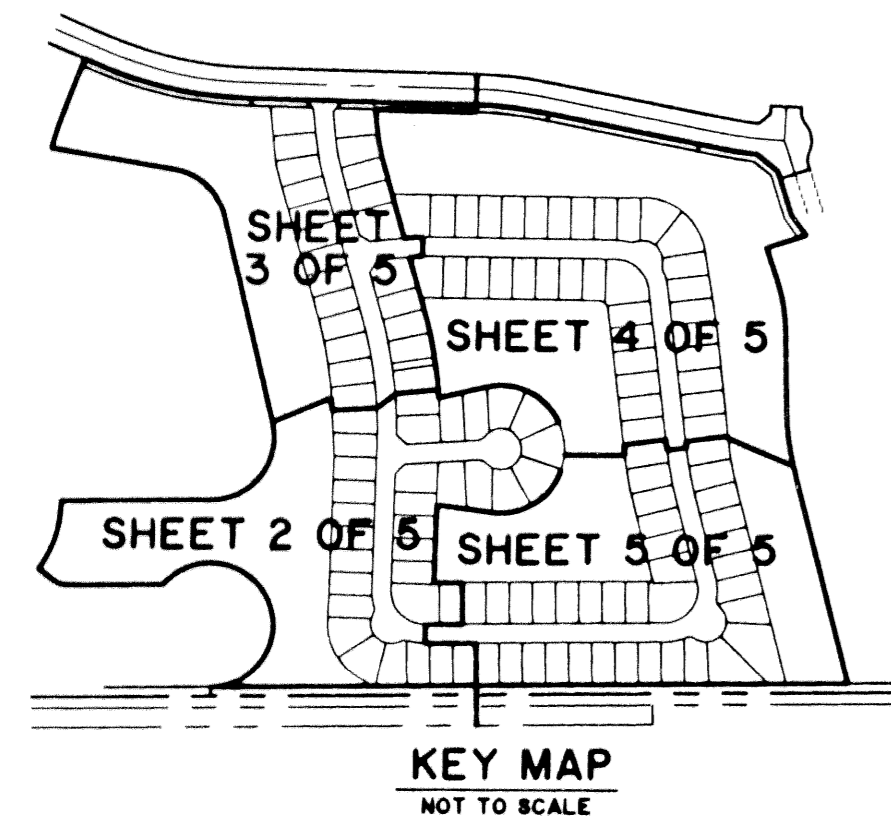


# MELROSE P.U.D. (VENETIAN ISLES) - PARCEL H

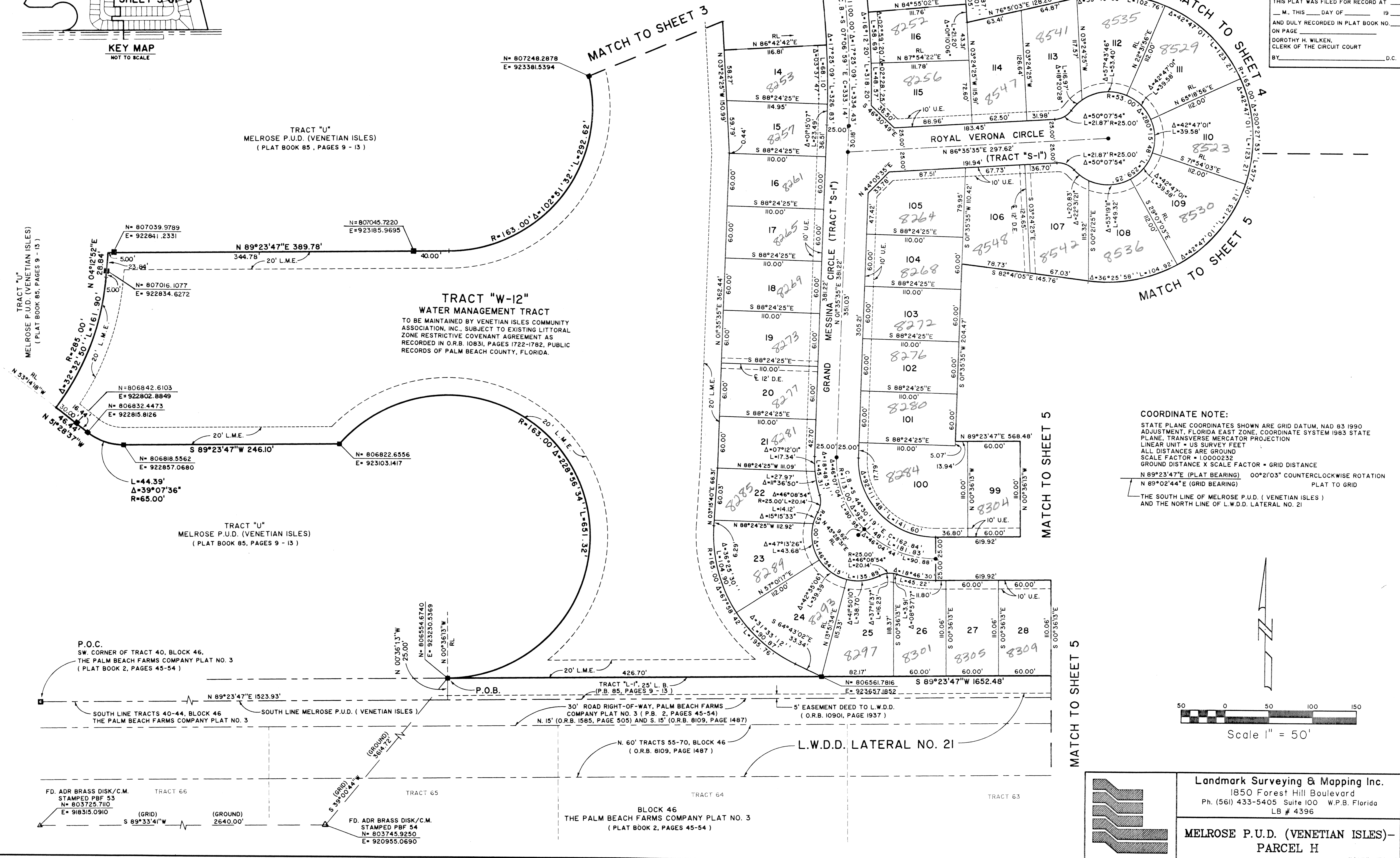
0255-010

38

A PORTION OF A PLANNED UNIT DEVELOPMENT  
 LYING IN SECTION 17, TOWNSHIP 45 SOUTH, RANGE 42 EAST,  
 BEING THE REPLAT OF A PORTION OF TRACT "U", MELROSE PARK (VENETIAN ISLES), AS  
 RECORDED IN PLAT BOOK 85, PAGES 9 THRU 13, PUBLIC RECORDS OF PALM BEACH COUNTY, FLORIDA.  
 SHEET 2 OF 5



STATE OF FLORIDA SS  
 COUNTY OF PALM BEACH  
 THIS PLAT WAS FILED FOR RECORD AT \_\_\_\_\_  
 M., THIS \_\_\_\_\_ DAY OF \_\_\_\_\_ 19\_\_\_\_  
 AND DULY RECORDED IN PLAT BOOK NO. \_\_\_\_\_  
 ON PAGE \_\_\_\_\_  
 DOROTHY H. WILKEN,  
 CLERK OF THE CIRCUIT COURT  
 BY \_\_\_\_\_ D.C.



STATIONERY Melrose, Palmetto Parcel H  
 SCALE 38  
 PLANNING #185A  
 ZONING KT  
 SU 801153  
 TAX 1030  
 PUDNAME Venetian Isles

**Landmark Surveying & Mapping Inc.**  
 1850 Forest Hill Boulevard  
 Ph. (561) 433-5405 Suite 100 W.P.B. Florida  
 LB # 4396

**MELROSE P.U.D. (VENETIAN ISLES) - PARCEL H**